



ANTONINI
NAVI



EXPLORER-47

EXPLORER-47

CONCEPT



Every detail has been carefully designed to ensure that guests will enjoy a comfortable stay for very long periods of time, on one hand, and to optimize navigation also under extreme conditions, on the other hand.

By way of example, tenders, rigid-hulled inflatable boats or landing crafts can be launched and recovered by using dedicated handling equipment: as a matter of fact, the Explorer's davits are exactly the same as those installed on the commercial ships to handle landing crafts h24 in full safety.



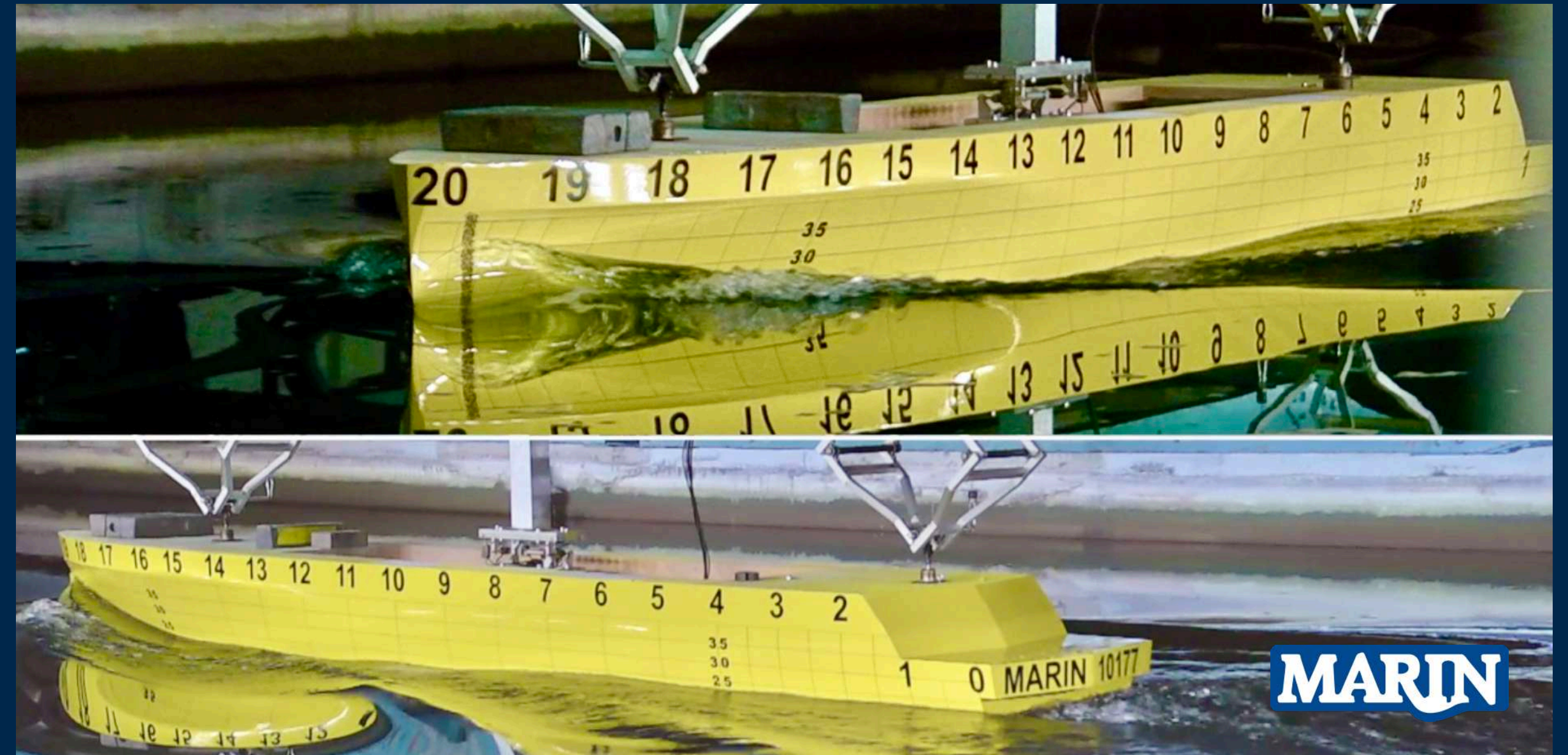


YACHT DESIGNER
FULVIO DE SIMONI

Fulvio de Simoni initiated his career in the 1970s. Known for his multifaceted, innovative, and non-conformist design approach, he collaborated with shipyards globally and contributed to the construction of over three thousand boats, earning numerous awards.



FULVIO DE SIMONI
YACHT DESIGN



The hull, hull lines, and appendages underwent static and dynamic testing at the MARIN Maritime Research Institute in the Netherlands.



EXPLORER-47
STRENGTHS



SUN DECK 58 m2

BEACH CLUB

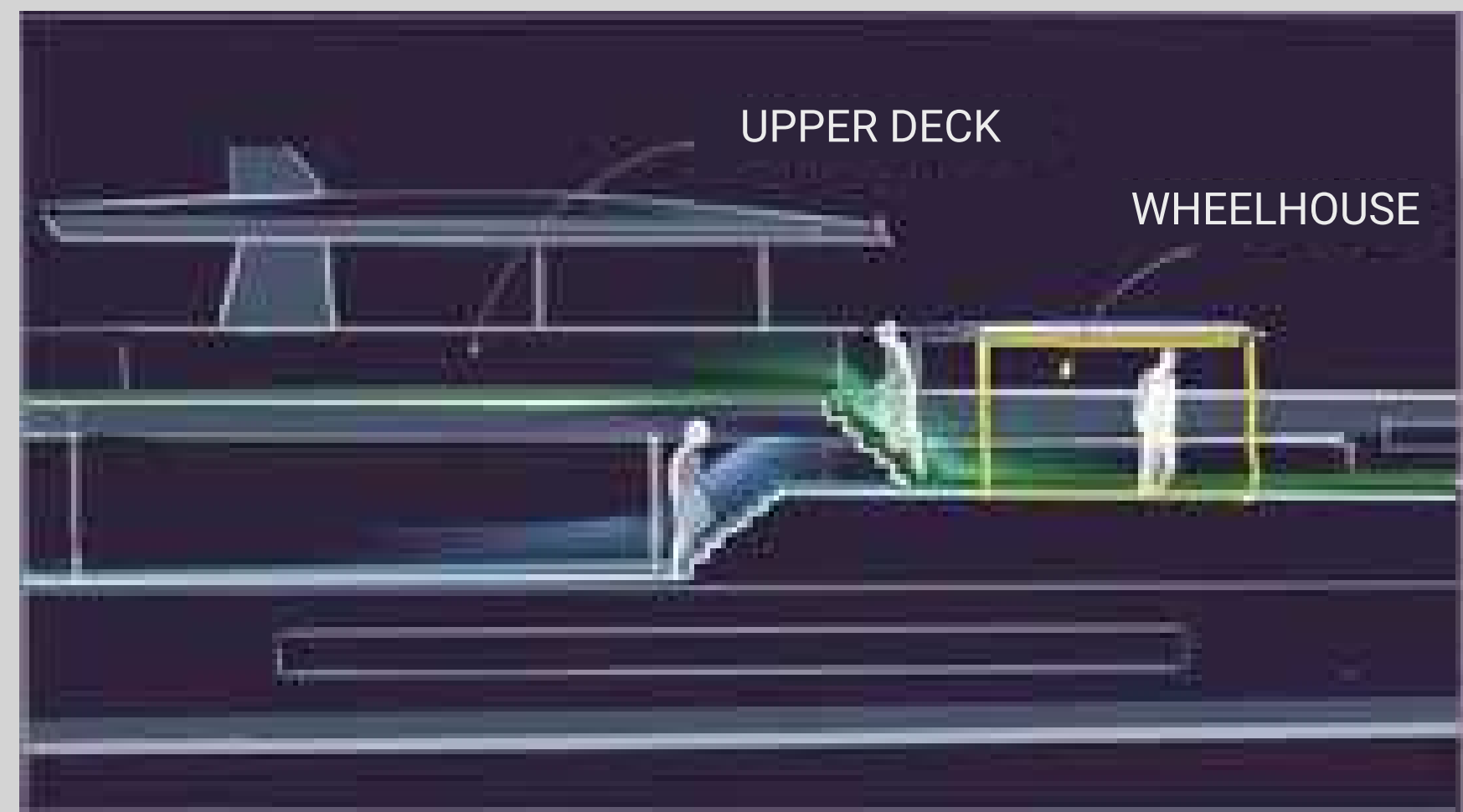
FLY BRIDGE PILOT STATION

WHEELHOUSE
17 m2

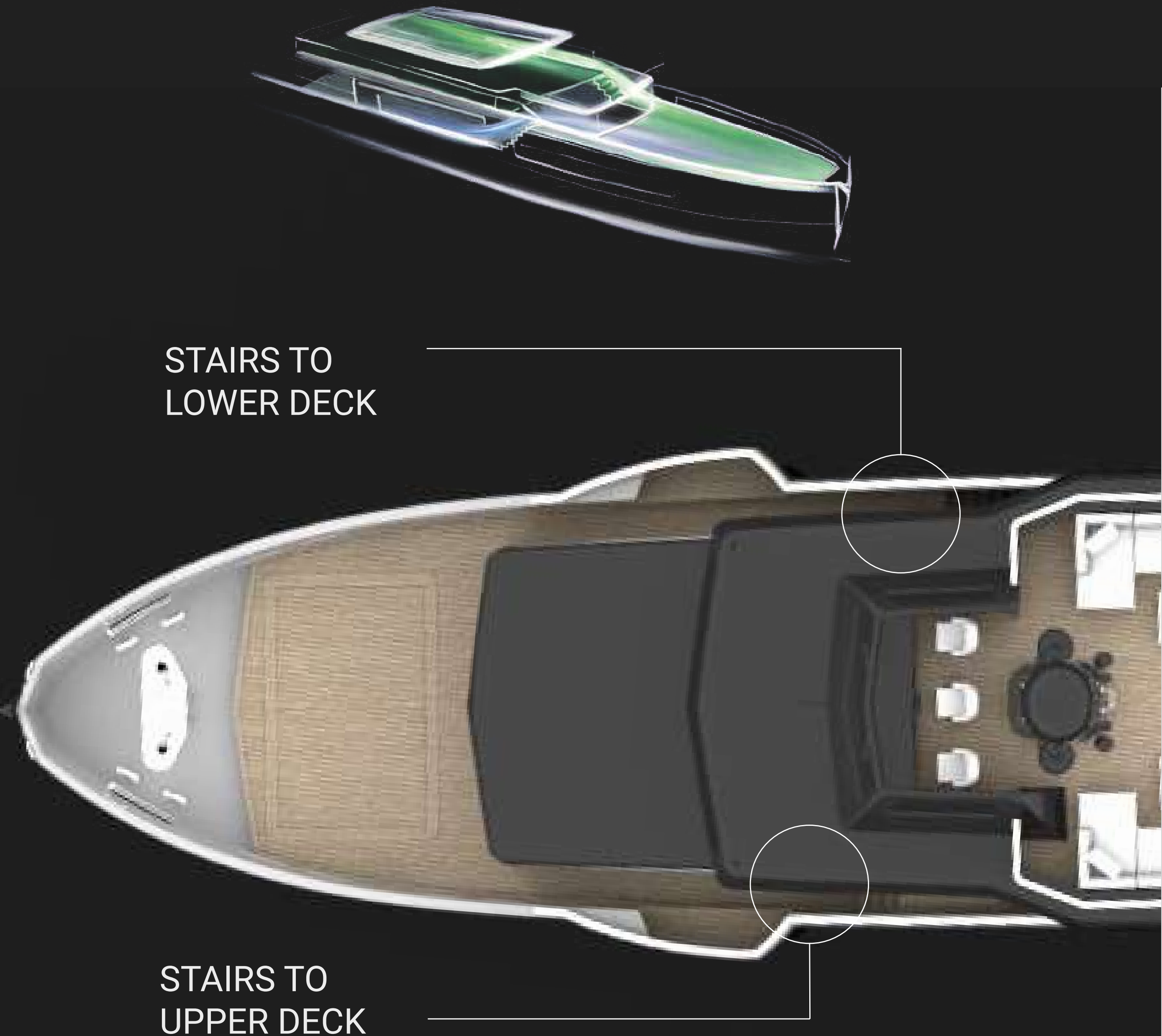
EXPLORER-47

DECKS CONNECTION

From the Main Deck it is possible to reach the Forward Deck along the starboard side of the boat. Conversely, the Forward Deck is directly connected with the Upper Deck or private access to the Owner's area.



2 LINEAR DECKS CONNECTED BY A MID-DECK WHEELHOUSE



BEACH CLUB



OWNER'S SUITE



EXPLORER-47

TECHNICAL SPECIFICATION

MATERIALS

Hull: Steel

Superstructure: Aluminium

DIMENSIONS

Length over all (LOA): 48.0 m

Maximum beam: 9.0 m

Waterline length at full load: 42.4 m

Draught, full load (even the keel): 2.3 m

GROSS TONNAGE: <499 GT

CAPACITIES

Total fuel oil: 70.000 Its

Total fresh Water:10.000 Its

Total black/gray Water: 4.000 Its

Bilge: 2.200 Its

Clean/dirty oil: 390 Its

PERFORMANCE

Cruising speed: 11.0 kts

Max Speed: 14.0 kts

Range @10 kts:..... 4.500 nm

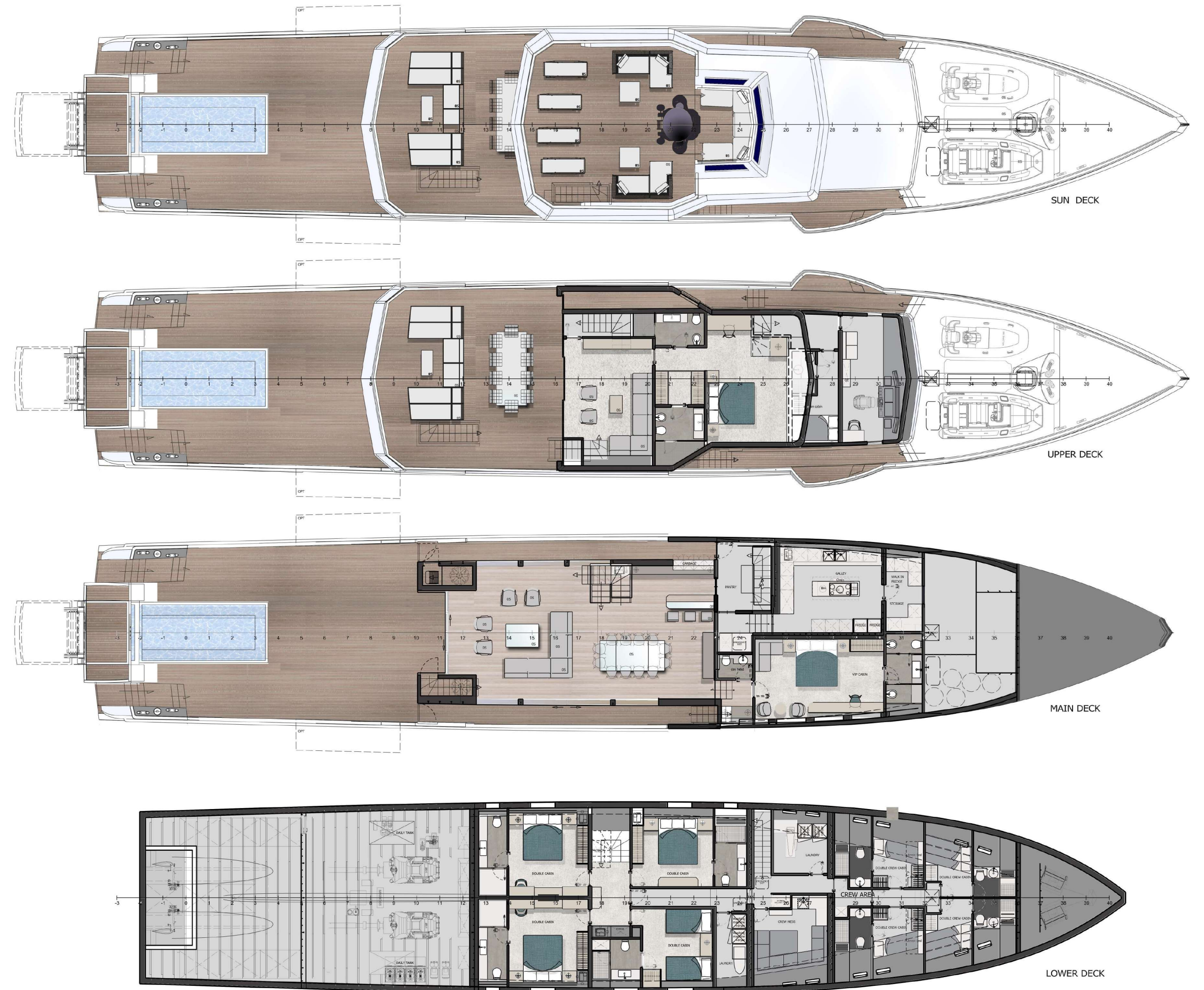
ENGINES: 2xMAN 1029 kW @2300 rpm

ACCOMMODATION

Passengers: 12p - 6 Cabins

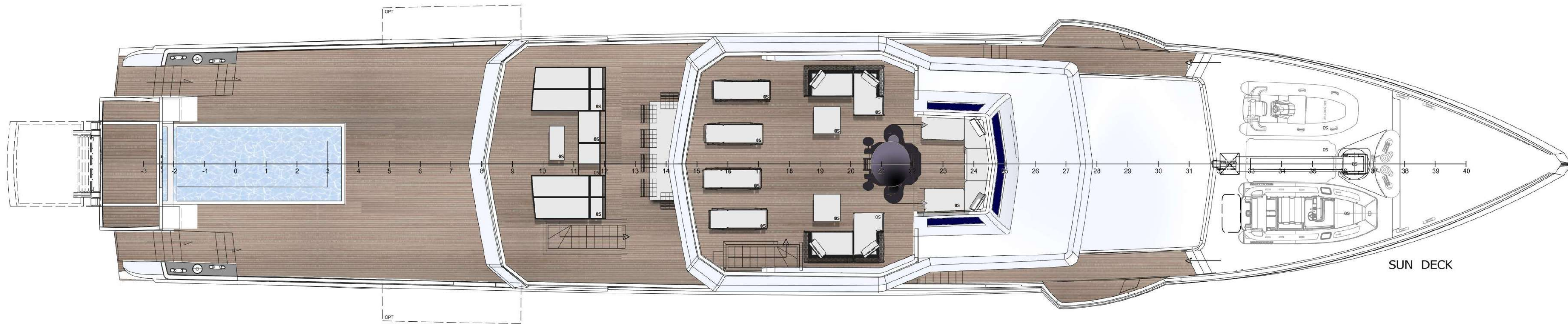
Crew: 11p - 6 Cabins

EXPLORER-47
**GENERAL
ARRANGEMENT**



EXPLORER-47

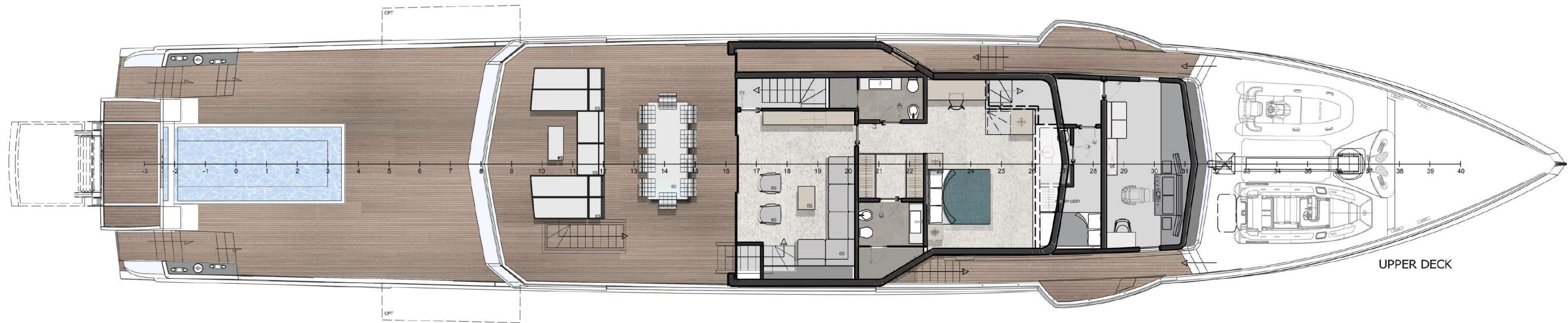
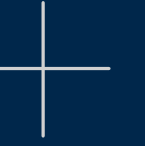
SUN DECK | BRIDGE DECK



SUN DECK

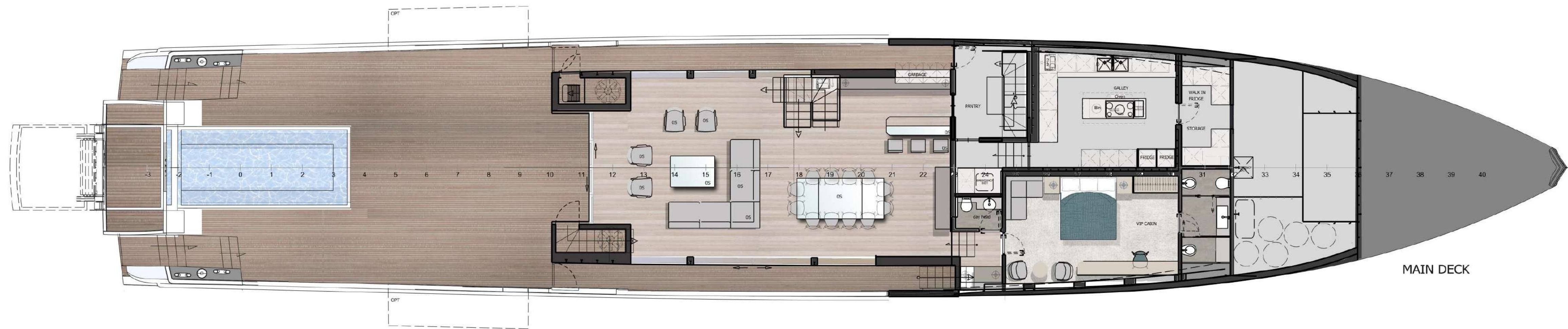
EXPLORER-47

UPPER DECK



EXPLORER-47

MAIN DECK



EXPLORER-47

LOWER DECK





EXPLORER-47



EXPLORER-47

SUN DECK
AREA



SUN DECK
AREA





ANTONINI
N A V I

ANTONINI NAVI S.R.L.

Sede legale e stabilimento:

Località Pertusola - Frazione Muggiano - 19032 Lerici (LA SPEZIA) - ITALY

Ph +39 0187 1771300

info@antonininavi.com

www.antonininavi.com - www.gruppoantonini.it